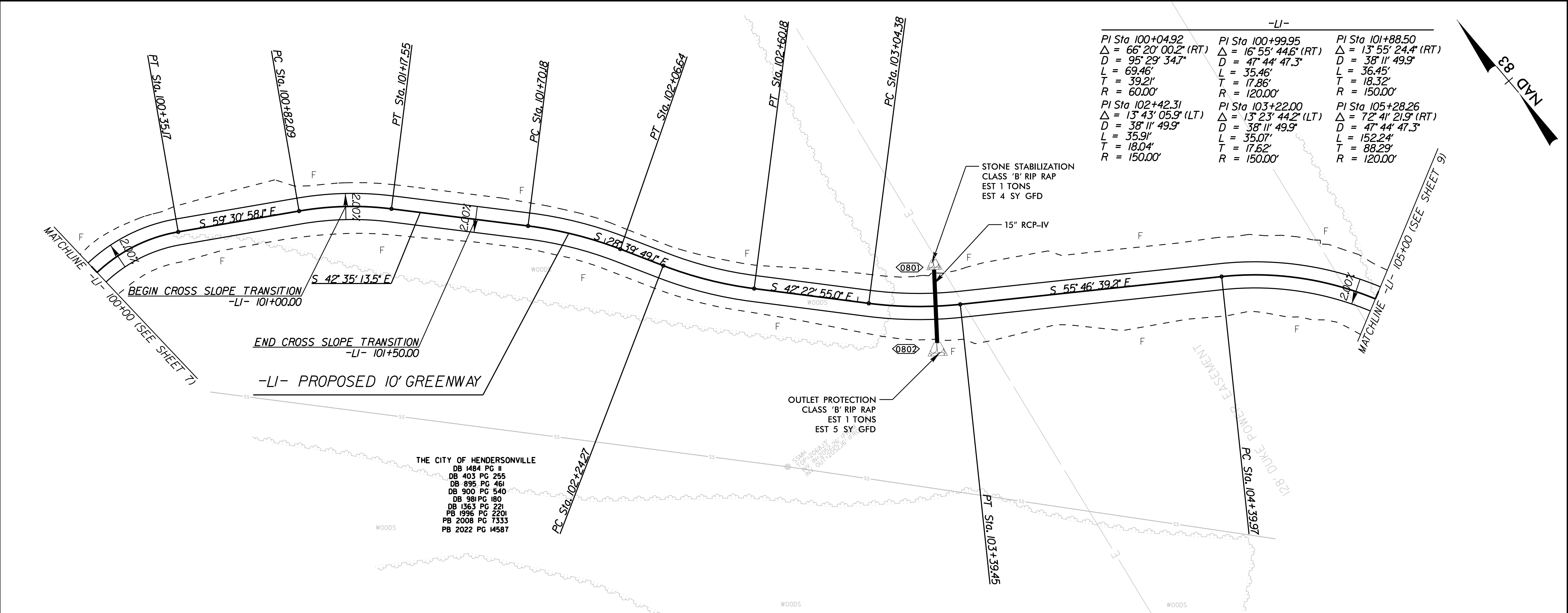
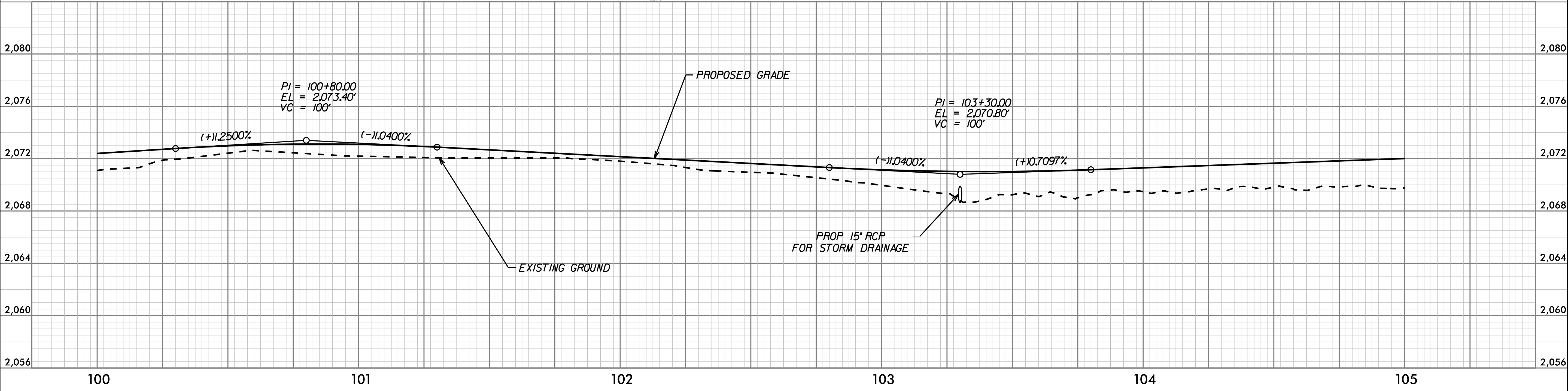


K:\RAL\_Roadway\015574013 - BL-0008 Clear Creek Greenway\Roadway\Proj\Plan Streets\BL-0008\_rdy\_psh\_B.dgn

11/26/2025



-LI-		
PI Sta 100+04.92 Δ = 66°20'00.2" (RT) D = 95°29'34.7" L = 69.46' T = 39.21' R = 60.00'	PI Sta 100+99.95 Δ = 16°55'44.6" (RT) D = 47°44'47.3" L = 35.46' T = 17.86' R = 120.00'	PI Sta 101+88.50 Δ = 13°55'24.4" (RT) D = 38°11'49.9" L = 36.45' T = 18.32' R = 150.00'
PI Sta 102+42.31 Δ = 13°43'05.9" (LT) D = 38°11'49.9" L = 35.91' T = 18.04' R = 150.00'	PI Sta 103+22.00 Δ = 13°23'44.2" (LT) D = 38°11'49.9" L = 35.07' T = 17.62' R = 150.00'	PI Sta 105+28.26 Δ = 72°41'21.9" (RT) D = 47°44'47.3" L = 152.24' T = 88.29' R = 120.00'



REV. NO.	REVISION	DATE	DRAWN BY	CHECKED BY

This document, together with the concepts and designs presented herein, as an instrument of service, is intended only for the specific purpose and client for which it was prepared. Reuse of and improper reliance on this document without written authorization and adoption by Kimley-Horn and Associates, Inc. shall be without liability to Kimley-Horn and Associates, Inc. Copyright Kimley-Horn and Associates, Inc., 2025

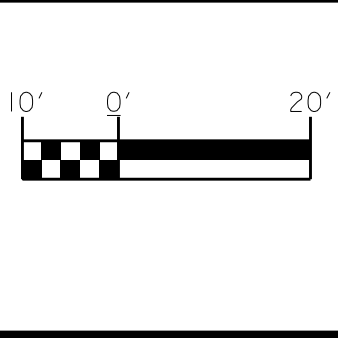
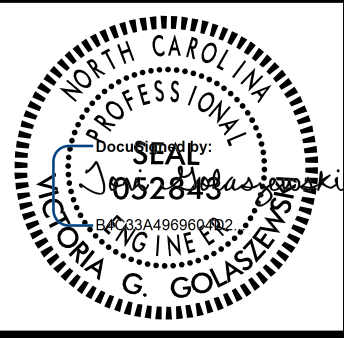
PREPARED IN THE OFFICE OF:

**Kimley»Horn**

NC LICENSE #F-0102  
200 S TRYON ST., SUITE 200  
CHARLOTTE, NORTH CAROLINA 28202  
PHONE: (704) 333-5131

© 2025

-L1- PLAN AND PROFILE



PROJECT:	CLEAR CREEK GREENWAY	
JOB NUMBER:	015574013	SHEET NUMBER:
		8